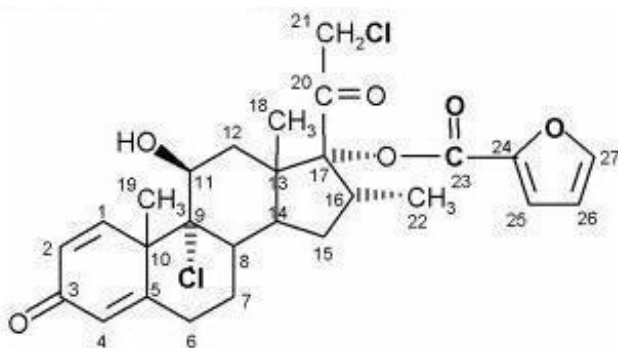


**PROPEL- drug-eluting sinus stent**  
**PROPEL MINI- drug-eluting sinus stent**  
**PROPEL CONTOUR- drug-eluting sinus stent**  
**Intersect ENT, INC.**

-----  
**Propel<sup>®</sup>/Propel<sup>®</sup> mini/Propel<sup>®</sup> Contour**  
**(mometasone furoate implant, 370 µg)**

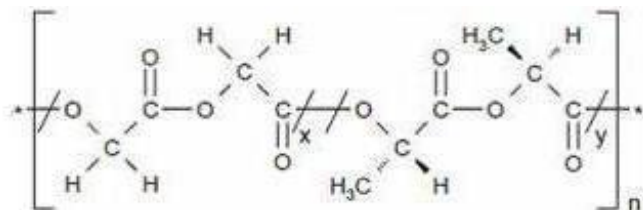
**DEVICE DESCRIPTION**

The Propel/Propel mini/Propel Contour sinus implant is a bioabsorbable implant designed to maintain patency of the sinus cavity (Propel/Propel mini) or sinus ostium (Propel Contour). The Propel/Propel mini/Propel Contour implant is manufactured from a synthetic bioabsorbable copolymer, poly (L-lactide-co-glycolide) (PLG). The implant contains mometasone furoate (active ingredient), a synthetic corticosteroid with anti-inflammatory activity. Mometasone furoate is a white to off-white powder. The chemical name is 9 $\alpha$ ,21-dichloro-11 $\beta$ ,17 $\alpha$ -dihydroxy-16 $\alpha$ -methylpregna-1,4-diene-3,20-dione 17-(2-furoate), with the empirical formula C<sub>27</sub>H<sub>30</sub>Cl<sub>2</sub>O<sub>6</sub>, and a molecular weight of 521.43 g/mol. Mometasone furoate is a hydrophobic drug that is practically insoluble in water. Mometasone furoate is stable under aqueous, acidic and oxidative conditions. Mometasone furoate can degrade under extreme basic, thermal and photolytic conditions. The chemical structure is shown. The drug is embedded in a bioabsorbable polymer matrix containing poly-(DL-lactide-co-glycolide) and polyethylene glycol (inactive ingredients) which provides for gradual release of the drug.



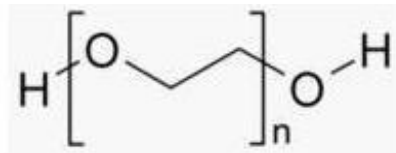
**Chemical structure of mometasone furoate**

The inactive ingredients on the sinus implant are poly-(DL-lactide-co-glycolide) and polyethylene glycol. Poly-(DL-lactide-co-glycolide) is an amorphous biodegradable polymer. The chemical structure is shown below.



**Chemical structure of poly-(DL-lactide-co-glycolide)**

Polyethylene glycol is a hydrophilic polyether compound that is highly flexible. It is non-toxic and non-immunogenic. The chemical structure is shown below.



**Chemical structure of polyethylene glycol**

The implant is designed to accommodate the size and variability of the post-surgical ethmoid sinus anatomy (for Propel), ethmoid or frontal sinus anatomy (for Propel mini), and frontal or maxillary sinus ostium anatomy for Propel Contour. The Propel/Propel mini/Propel Contour implant is designed to be inserted by a physician under endoscopic visualization and once inserted, the implant is designed to be self-retaining against the mucosa of the surgically enlarged sinus (Propel/Propel mini) or sinus ostium (Propel Contour). A delivery system is provided to access the ethmoid sinus (for Propel), ethmoid or frontal sinus (for Propel mini), and frontal or maxillary sinus ostium (for the Propel Contour) and insert the implant.

## **INDICATIONS FOR USE**

The Propel sinus implant is intended for use in patients  $\geq 18$  years of age following ethmoid sinus surgery to maintain patency, thereby reducing the need for post-operative intervention such as surgical adhesion lysis and/or use of oral steroids. The Propel implant separates mucosal tissues, provides stabilization of the middle turbinate, prevents obstruction by adhesions, and reduces edema.

The Propel mini sinus implant is intended for use in patients  $\geq 18$  years of age following ethmoid/frontal sinus surgery to maintain patency of the ethmoid sinus or frontal sinus opening. The Propel mini sinus implant separates/dilates surrounding mucosal tissues, provides stabilization of the middle turbinate, prevents obstruction by adhesions, and reduces inflammation. The implant reduces the need for post-operative intervention such as surgical adhesion lysis and/or use of oral steroids.

The Propel Contour sinus implant is intended for use in patients  $\geq 18$  years of age to maintain patency of the frontal and maxillary sinus ostia following sinus surgery and locally deliver steroids to the sinus mucosa. The PROPEL Contour sinus implant separates/dilates mucosal tissues, prevents obstruction by adhesions/scarring, and reduces edema. The implant reduces the need for post-operative intervention such as surgical adhesion lysis and/or use of oral steroids.

## **CONTRAINDICATIONS**

The use of the Propel/Propel mini/Propel Contour sinus implant is contraindicated in the following patients:

- Patients with suspected or confirmed intolerance to mometasone furoate.
- Patients with a known hypersensitivity to lactide, glycolide or caprolactone copolymers.

## **WARNINGS AND PRECAUTIONS**

### **WARNINGS**

- The Propel/Propel mini/Propel Contour sinus implant is designed for single patient use only. Do not reprocess or reuse.
- Do not use if the package is open or damaged.

### **PRECAUTIONS**

- Special care should be taken to avoid bending, twisting or damaging the implant.

- The implant is not designed to be modified by the physician.
- The implant is not intended to be compressed and loaded into the delivery system more than two times.
- The implant must be placed under endoscopic visualization.
- The implant exhibits no antimicrobial properties.
- Foreign body reaction may occur as is possible with most surgical adjuncts.
- In rare instances, the physiochemical condition associated with sinus surgery, both with and without sinus implants or packing, may present a risk of toxic shock syndrome (TSS).
- Pediatric Use: The safety and effectiveness of the implant in pediatric patients have not been established.
- Pregnancy and Nursing Females: The safety and effectiveness of the implant in pregnant or nursing females have not been established.

## **DRUG INFORMATION**

**MECHANISM OF ACTION:** Corticosteroids have been shown to have a wide range of effects on multiple cell types (e.g., mast cells, eosinophils, neutrophils, macrophages, and lymphocytes) and mediators (e.g., histamine, eicosanoids, leukotrienes, and cytokines) involved in inflammation. The precise mechanism behind the anti-inflammatory properties of the eluted mometasone furoate is not known.

**PHARMACOKINETICS:** The Propel sinus implant underwent pharmacokinetics testing. Following bilateral drug-eluting Propel implant placement after sinus surgery for chronic sinusitis and subsequent weekly morning blood sampling for 4 weeks in 5 adult patients, plasma mometasone furoate concentrations were not quantifiable at any time point. Mean cortisol concentrations were within normal limits.

## **DRUG INTERACTIONS**

No drug-drug interaction studies have been conducted with the Propel/Propel mini/Propel Contour implant.

## **CARCINOGENICITY, GENOTOXICITY AND REPRODUCTIVE TOXICITY**

No long term studies in animals have been performed to evaluate the carcinogenic potential of the Propel/Propel mini/Propel Contour implant.

## **PREGNANCY**

There have been no controlled studies in pregnant women using the Propel/Propel mini/Propel Contour implant. The Propel<sup>®</sup>/Propel<sup>®</sup> mini/Propel<sup>®</sup> Contour sinus implant should be used during pregnancy only if the potential benefits justify the potential risk.

## **LACTATION**

It is not known if mometasone furoate is excreted in human milk. Because other corticosteroids are excreted in human milk, the Propel/Propel mini/Propel Contour sinus implant should be used only if the potential benefits justify the potential risk.

## **DOSAGE AND ADMINISTRATION**

Each Propel/Propel mini/Propel Contour sinus implant contains 370µg of mometasone furoate which is gradually released over time.

## **I. POTENTIAL ADVERSE EFFECTS OF THE DEVICE ON HEALTH**

Potential Adverse Effects: Potential adverse effects associated with the Propel/Propel mini/Propel Contour sinus implant are anticipated to be similar to those associated with other sinus stents, gels or packing.

Potential adverse effects associated with the Propel/Propel mini/Propel Contour sinus implant include, but may not be limited to:

- Premature displacement of implant or implant fragments
- Swallowing implant or implant fragments
- Pain/pressure/headache may result from the adherence of crusting to, or presence of the implant
- Aspiration of small implant fragments (not observed in clinical trials)
- Foreign body response, including formation of granulation tissue

Potential risks or side effects associated with intranasal mometasone furoate include:

- nasal irritation
- hypersensitivity reaction
- intranasal bleeding
- localized infection (bacterial, fungal or viral) in the nose or pharynx
- nasal burning
- nasal dryness
- susceptibility to secondary infections due to bacteria, fungi or viruses
- glaucoma/elevation of intraocular pressure
- cataracts/change in lens opacities
- headache
- pharyngitis

Potential risks or general side effects associated with steroids:

- alteration of the HPA axis including growth suppression
- immunosuppression
- hypersensitivity reactions
- headache
- epistaxis
- coughing
- vomiting
- candidiasis
- glaucoma/elevation in intraocular pressure
- cataracts/changes in lens opacities
- arthralgia
- myalgia

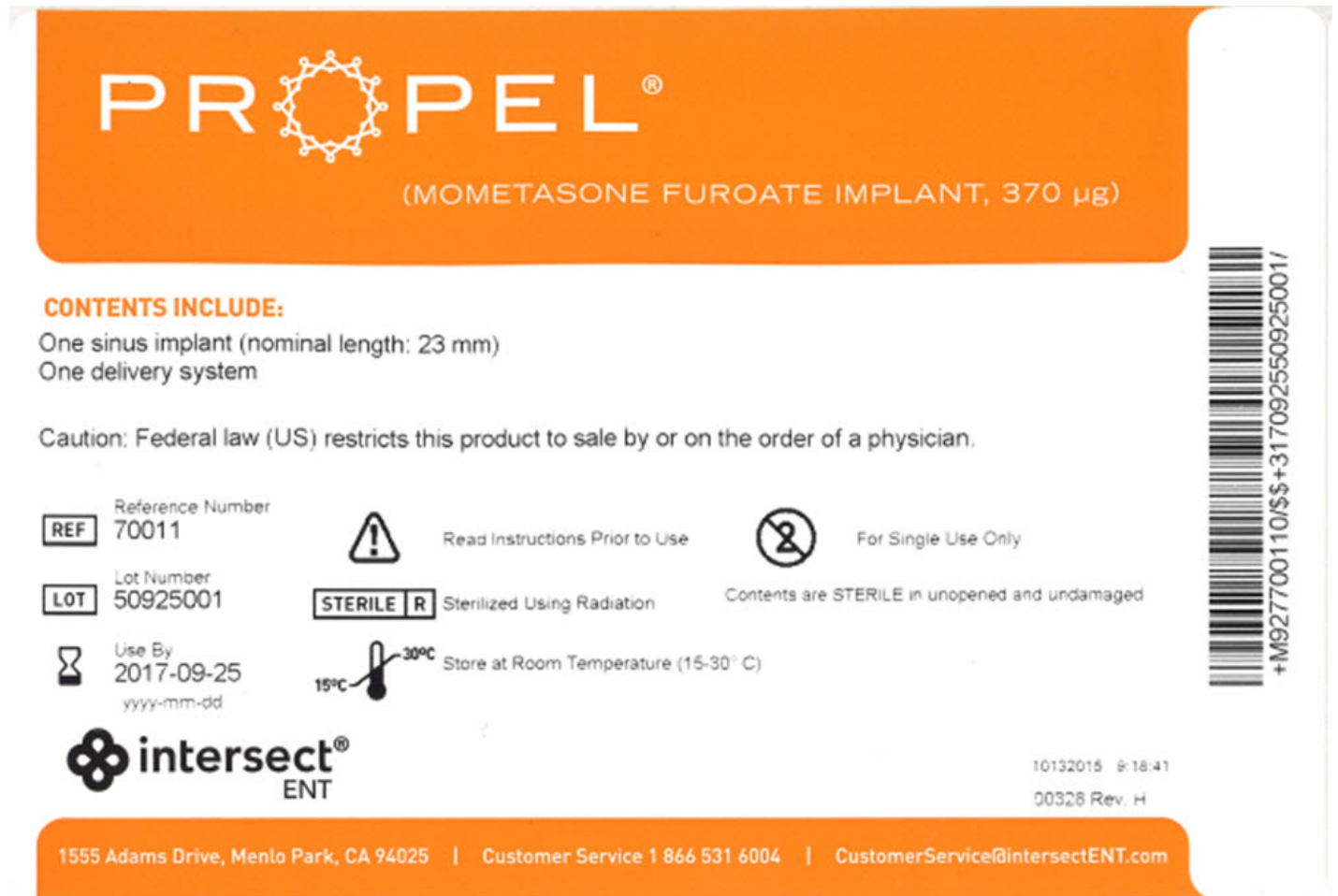
Manufactured by:

Intersect ENT Inc.  
1555 Adams Drive  
Menlo Park, CA 94025  
650-641-2100

[www.intersectENT.com](http://www.intersectENT.com)

Customer Service 1-866-531-6004  
CustomerService@intersectENT.com

**PACKAGE/LABEL PRINCIPAL DISPLAY PANEL – Propel®**



**Propel®**  
(mometasone furoate implant, 370 µg)

**CONTENTS INCLUDE:**  
One sinus implant (nominal length: 23 mm)  
One delivery system

Caution: Federal Law (US) restricts this product to sale by or on the order of a physician.

Reference Number 70011	Read Instructions Prior to Use	For Single Use Only
Lot Number 50925001	Sterilized Using Radiation	Contents are STERILE in unopened and undamaged package
Use By 2017-09-25 yyyy-mm-dd	Store at Room Temperature (15-30° C)	

**intersect® ENT**

10132015 9:18:41

00328 Rev. H

1555 Adams Drive, Menlo Park, CA 94025

Customer Service 1-866-531-6004

CustomerService@intersectENT.com

**PACKAGE/LABEL PRINCIPAL DISPLAY PANEL – Propel® mini**

**PROPEL<sup>®</sup>**  
mini  
(MOMETASONE FUROATE IMPLANT, 370 µg)

**CONTENTS INCLUDE:**  
One sinus implant (nominal length: 16 mm)  
One delivery system

Caution: Federal law (US) restricts this product to sale by or on the order of a physician.

Reference Number **REF** 60011      Read Instructions Prior to Use      For Single Use Only

Lot Number **LOT** 51008001      **STERILE R** Sterilized Using Radiation      Contents are STERILE in unopened and undamaged

Use By 2017-10-08  
yyyy-mm-dd      15°C - 30°C Store at Room Temperature (15-30° C)

**intersect<sup>®</sup>**  
ENT

10122015 11:42:32  
00327 Rev.K

1555 Adams Drive, Menlo Park, CA 94025 | Customer Service 1 866 531 6004 | CustomerService@intersectENT.com

+M927600110/\$\$+317100851008001P

**Propel® mini**

(mometasone furoate implant, 370 µg)

**CONTENTS INCLUDE:**

One sinus implant (nominal length: 16 mm)

One delivery system

Caution: Federal Law (US) restricts this product to sale by or on the order of a physician.

Reference Number 60011	Read Instructions Prior to Use	For Single Use Only
Lot Number 51008001	Sterilized Using Radiation	Contents are STERILE in unopened and undamaged package
Use By 2017-10-08 yyyy-mm-dd	Store at Room Temperature (15-30° C)	

intersect® ENT

10122015 11:42:32  
00327 Rev. K

1555 Adams Drive, Menlo Park, CA 94025  
Customer Service 1-866-531-6004  
CustomerService@intersectENT.com

**PACKAGE/LABEL PRINCIPAL DISPLAY PANEL – Propel® Contour**



**CONTENTS INCLUDE:**

One sinus implant  
One delivery system

Caution: Federal law (US) restricts this product to sale by or on the order of a physician.



**REF** Reference Number  
50011



Read Instructions Prior to Use



For Single Use Only

**LOT** Lot Number  
71020004

**STERILE R**

Sterilized Using Radiation

Contents are **STERILE** in unopened and undamaged package.



Use By  
2019-10-20  
yyyy-mm-dd



Store at Room Temperature (15-30° C)



10242017 15:40:07

00385 Rev. J

1555 Adams Drive, Menlo Park, CA 94025 | Customer Service 1 866 531 6004 | CustomerService@intersectENT.com

**Propel® Contour**

(mometasone furoate implant, 370 µg)

**CONTENTS INCLUDE:**

One sinus implant  
One delivery system

Caution: Federal law (US) restricts this product to sale by or on the order of a physician.

Reference Number 50011  
Read Instructions Prior to Use

For Single Use Only

Lot Number 71020004  
Sterilized Using Radiation

Contents are **STERILE** in unopened and undamaged package

Use By  
2019-10-20  
yyyy-mm-dd

Store at Room Temperature (15-30° C)

**intersect® ENT**

10242017 15:40:07  
00385 Rev. J

1555 Adams Drive, Menlo Park, CA 94025  
Customer Service 1-866-531-6004  
CustomerService@intersectENT.com

**PROPEL**

drug-eluting sinus stent kit

**Product Information**

<b>Product Type</b>	MEDICAL DEVICE	<b>Item Code (Source)</b>	NHRIC:10599-000
---------------------	----------------	---------------------------	-----------------

**Packaging**

#	Item Code	Package Description	Marketing Start Date	Marketing End Date
1	NHRIC:10599-000-01	1 in 1 PACKAGE		

**Quantity of Parts**

Part #	Package Quantity	Total Product Quantity
Part 1		1
Part 2		1

**Part 1 of 2**

**DELIVERY SYSTEM**

drug-eluting sinus stent implant

**Product Information**

<b>Route of Administration</b>	NASAL
--------------------------------	-------

**Inactive Ingredients**

Ingredient Name	Strength
POLYETHYLENE GLYCOLS (UNII: 3WJQ0SDW1A)	

**Marketing Information**



Marketing Category	Application Number or Monograph Citation	Marketing Start Date	Marketing End Date
Premarket Application	P100044	08/19/2011	

## Part 2 of 2

### PROPEL

drug-eluting sinus stent implant

#### Product Information

Route of Administration NASAL

#### Active Ingredient/Active Moiety

Ingredient Name	Basis of Strength	Strength
MOMETASONE FUROATE (UNII: 04201GDN4R) (MOMETASONE FUROATE - UNII:04201GDN4R)	MOMETASONE FUROATE	370 ug

#### Inactive Ingredients

Ingredient Name	Strength
POLY(DL-LACTIC-CO-GLYCOLIC ACID), (50:50; 12000 MW) (UNII: WE369X5600)	
POLYETHYLENE GLYCOLS (UNII: 3WJQ0SDW1A)	

#### Marketing Information

Marketing Category	Application Number or Monograph Citation	Marketing Start Date	Marketing End Date
Premarket Application	P100044	08/19/2011	

#### Marketing Information

Marketing Category	Application Number or Monograph Citation	Marketing Start Date	Marketing End Date
Premarket Application	P100044	08/19/2011	

### PROPEL MINI

drug-eluting sinus stent kit

#### Product Information

Product Type MEDICAL DEVICE Item Code (Source) NHRIC:10599-001

#### Packaging

#	Item Code	Package Description	Marketing Start Date	Marketing End Date
---	-----------	---------------------	----------------------	--------------------

1	NHRIC:10599-001-01	1 in 1 PACKAGE	
---	--------------------	----------------	--

### Quantity of Parts

Part #	Package Quantity	Total Product Quantity
Part 1		1
Part 2		1

### Part 1 of 2

#### DELIVERY SYSTEM

drug-eluting sinus stent implant

### Product Information

Route of Administration	NASAL
-------------------------	-------

### Inactive Ingredients

Ingredient Name	Strength
POLYETHYLENE GLYCOLS (UNII: 3WJQ0SDW1A)	

### Marketing Information

Marketing Category	Application Number or Monograph Citation	Marketing Start Date	Marketing End Date
Premarket Application	P100044	09/21/2012	

### Part 2 of 2

#### PROPEL MINI

drug-eluting sinus stent implant

### Product Information

Route of Administration	NASAL
-------------------------	-------

### Active Ingredient/Active Moiety

Ingredient Name	Basis of Strength	Strength
MOMETASONE FUROATE (UNII: 04201GDN4R) (MOMETASONE FUROATE - UNII:04201GDN4R)	MOMETASONE FUROATE	370 ug

### Inactive Ingredients

Ingredient Name		Strength	
POLY(DL-LACTIC-CO-GLYCOLIC ACID), (50:50; 12000 MW) (UNII: WE369X5600)			
POLYETHYLENE GLYCOLS (UNII: 3WJQ0SDW1A)			
<b>Marketing Information</b>			
Marketing Category	Application Number or Monograph Citation	Marketing Start Date	Marketing End Date
Premarket Application	P100044	09/21/2012	
<b>Marketing Information</b>			
Marketing Category	Application Number or Monograph Citation	Marketing Start Date	Marketing End Date
Premarket Application	P100044	09/21/2012	

PROPEL CONTOUR				
drug-eluting sinus stent kit				
<b>Product Information</b>				
Product Type	MEDICAL DEVICE	Item Code (Source)	NHRIC:10599-002	
<b>Packaging</b>				
#	Item Code	Package Description	Marketing Start Date	Marketing End Date
1	NHRIC:10599-002-01	1 in 1 PACKAGE		
<b>Quantity of Parts</b>				
Part #	Package Quantity	Total Product Quantity		
Part 1		1		
Part 2		1		
<b>Part 1 of 2</b>				
<b>DELIVERY SYSTEM</b>				
drug-eluting sinus stent implant				
<b>Product Information</b>				
Route of Administration	NASAL			
<b>Inactive Ingredients</b>				
Ingredient Name				Strength

POLYETHYLENE GLYCOLS (UNII: 3WJQ0SDW1A)

## Marketing Information

Marketing Category	Application Number or Monograph Citation	Marketing Start Date	Marketing End Date
Premarket Application	P100044	02/23/2017	

## Part 2 of 2

### PROPEL CONTOUR

drug-eluting sinus stent implant

## Product Information

Route of Administration NASAL

## Active Ingredient/Active Moiety

Ingredient Name	Basis of Strength	Strength
MOMETASONE FUROATE (UNII: 04201GDN4R) (MOMETASONE FUROATE - UNII:04201GDN4R)	MOMETASONE FUROATE	370 ug

## Inactive Ingredients

Ingredient Name	Strength
POLY(DL-LACTIC-CO-GLYCOLIC ACID), (50:50; 12000 MW) (UNII: WE369X5600)	
POLYETHYLENE GLYCOLS (UNII: 3WJQ0SDW1A)	

## Marketing Information

Marketing Category	Application Number or Monograph Citation	Marketing Start Date	Marketing End Date
Premarket Application	P100044	02/23/2017	

## Marketing Information

Marketing Category	Application Number or Monograph Citation	Marketing Start Date	Marketing End Date
Premarket Application	P100044	02/23/2017	

**Labeler** - Intersect ENT, INC. (876715355)

## Establishment

Name	Address	ID/FEI	Business Operations
Intersect ENT, INC.		876715355	MANUFACTURE

